

4 - BEDROOM DELUXE

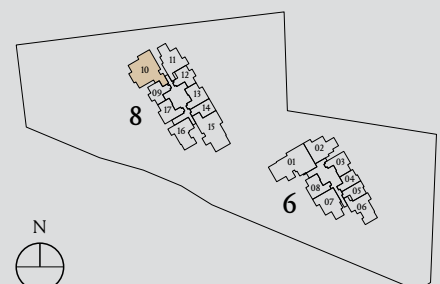
Type 4D1

Area: 149 sqm (include 7 sqm A/C Ledge, 11 sqm Balcony)

Unit(s): #02-10 to #22-10



Plans are subject to change/amendments as may be required and/or approved by the Developer and/or the relevant authorities and do not form part of any offer or contract. These are not drawn to scale and are for the purpose of visual presentation only. The balcony shall not be enclosed unless with the approved balcony screen. For an illustration of the approved balcony screen, please refer to APPROVED BALCONY SCREEN DESIGN page of this brochure.

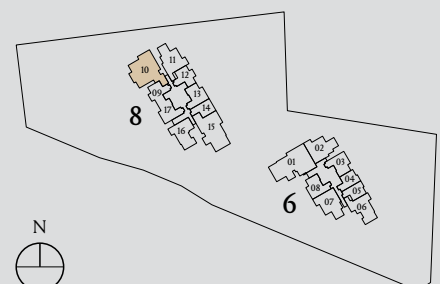
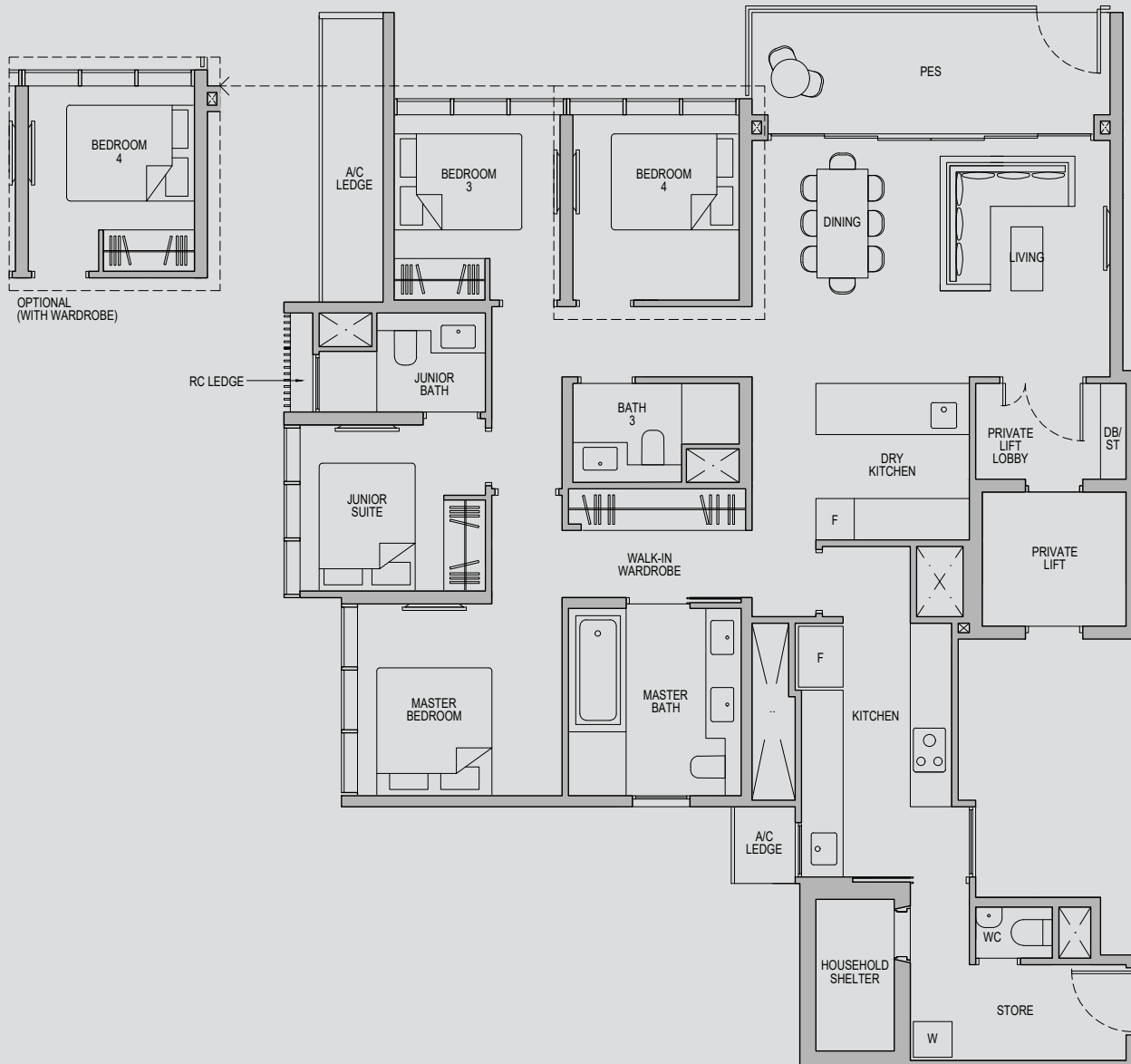


4 - BEDROOM DELUXE

Type 4D1-G

Area: 149 sqm (include 7 sqm A/C Ledge, 11 sqm PES)

Unit(s): #01-10



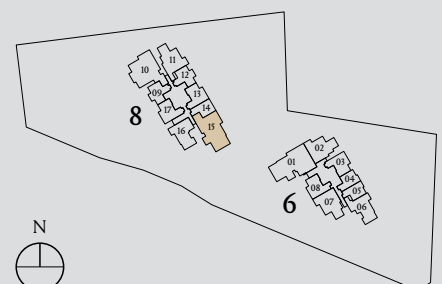
Plans are subject to change/amendments as may be required and/or approved by the Developer and/or the relevant authorities and do not form part of any offer or contract. These are not drawn to scale and are for the purpose of visual presentation only. The balcony shall not be enclosed unless with the approved balcony screen. For an illustration of the approved balcony screen, please refer to APPROVED BALCONY SCREEN DESIGN page of this brochure.

4 - BEDROOM DELUXE

Type 4D2

Area: 142 sqm (include 7 sqm A/C Ledge, 12 sqm Balcony)

Unit(s): #02-15 to #04-15



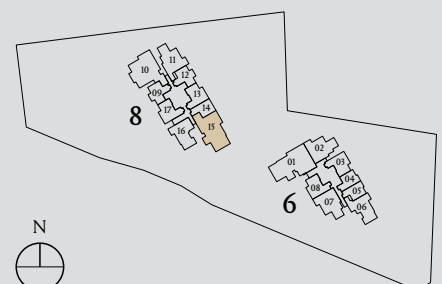
Plans are subject to change/amendments as may be required and/or approved by the Developer and/or the relevant authorities and do not form part of any offer or contract. These are not drawn to scale and are for the purpose of visual presentation only. The balcony shall not be enclosed unless with the approved balcony screen. For an illustration of the approved balcony screen, please refer to APPROVED BALCONY SCREEN DESIGN page of this brochure.

4 - BEDROOM DELUXE

Type 4D2-G

Area: 141 sqm (include 6 sqm A/C Ledge, 12 sqm PES)

Unit(s): #01-15



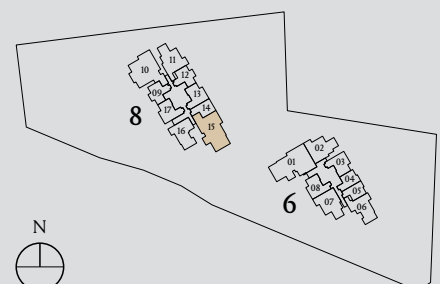
Plans are subject to change/amendments as may be required and/or approved by the Developer and/or the relevant authorities and do not form part of any offer or contract. These are not drawn to scale and are for the purpose of visual presentation only. The balcony shall not be enclosed unless with the approved balcony screen. For an illustration of the approved balcony screen, please refer to APPROVED BALCONY SCREEN DESIGN page of this brochure.

4 - BEDROOM DELUXE

Type 4D2a

Area: 142 sqm (include 7 sqm A/C Ledge, 12 sqm Balcony)

Unit(s): #05-15 to #22-15



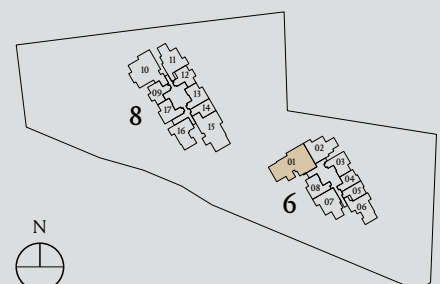
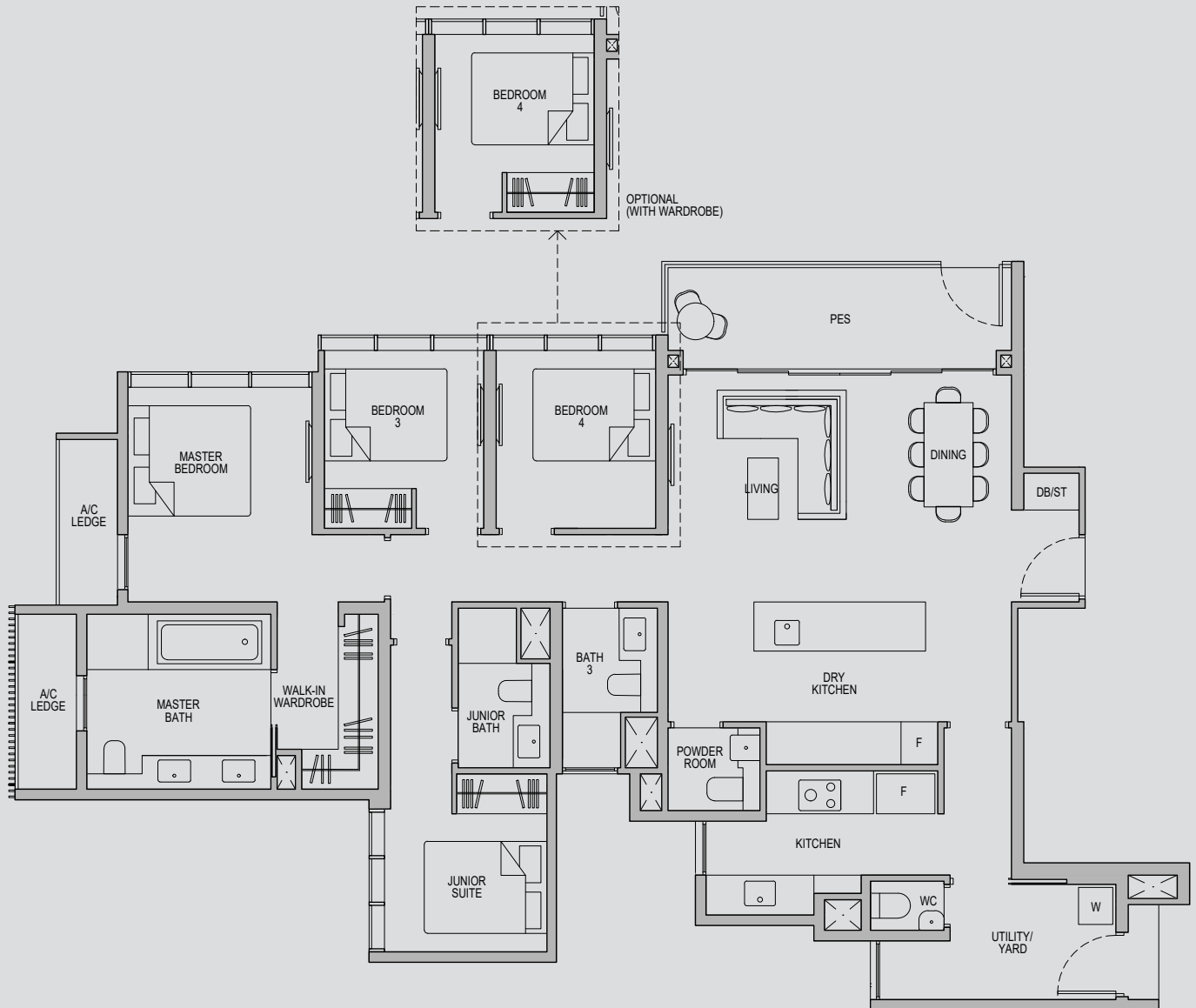
Plans are subject to change/amendments as may be required and/or approved by the Developer and/or the relevant authorities and do not form part of any offer or contract. These are not drawn to scale and are for the purpose of visual presentation only. The balcony shall not be enclosed unless with the approved balcony screen. For an illustration of the approved balcony screen, please refer to APPROVED BALCONY SCREEN DESIGN page of this brochure.

4 - BEDROOM DELUXE

Type 4D3-G

Area: 148 sqm (include 6 sqm A/C Ledge, 10 sqm PES)

Unit(s): #01-01



Plans are subject to change/amendments as may be required and/or approved by the Developer and/or the relevant authorities and do not form part of any offer or contract. These are not drawn to scale and are for the purpose of visual presentation only. The balcony shall not be enclosed unless with the approved balcony screen. For an illustration of the approved balcony screen, please refer to APPROVED BALCONY SCREEN DESIGN page of this brochure.