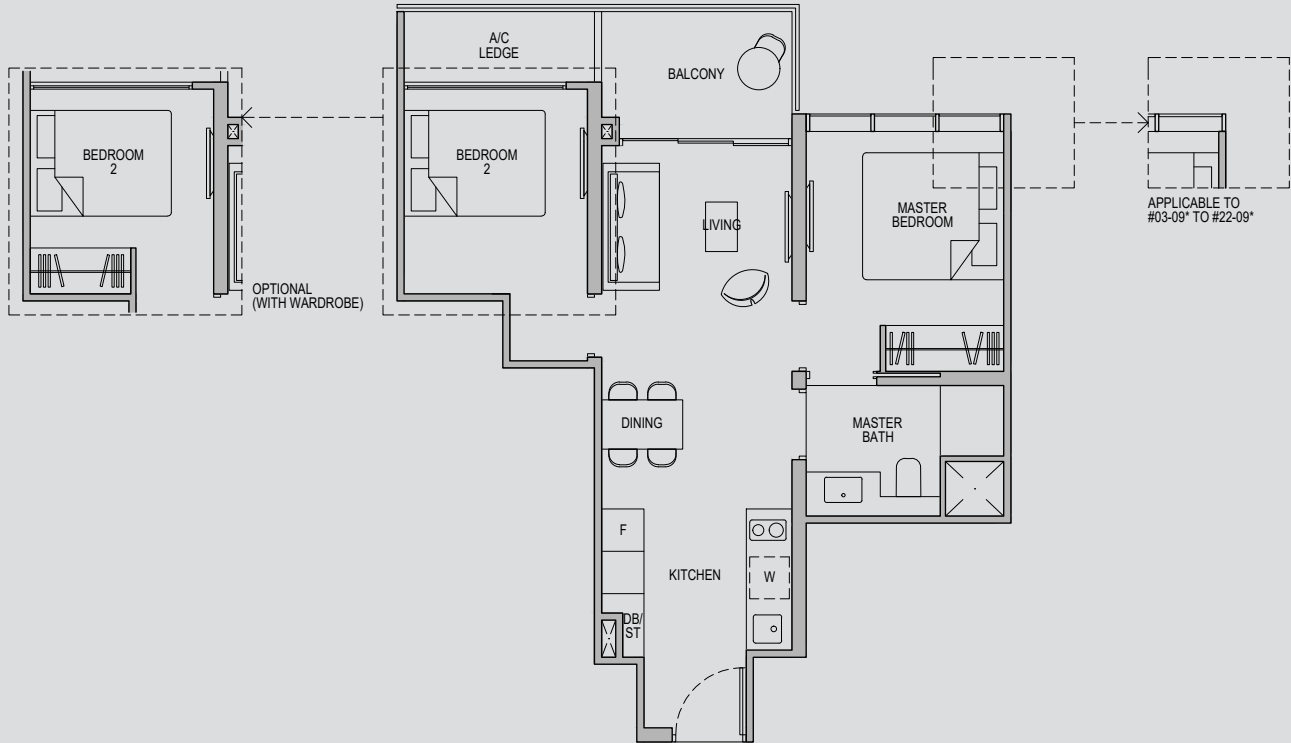


# 2 - BEDROOM CLASSIC

## Type 2C1

Area: 57 sqm (include 3 sqm A/C Ledge, 5 sqm Balcony)

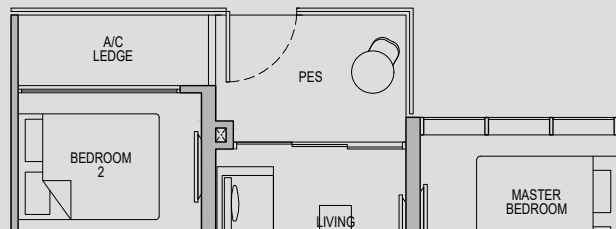
Unit(s): #03-09\* to #22-09\*  
#02-12 to #22-12



## Type 2C1-G

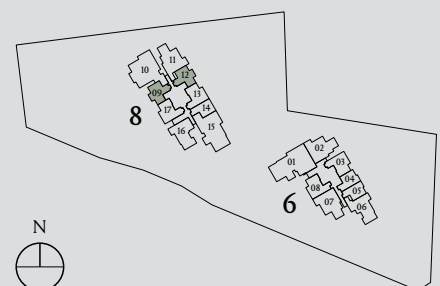
Area: 57 sqm (include 3 sqm A/C Ledge, 5 sqm PES)

Unit(s): #01-12



Note: \*Mirror Image

Plans are subject to change/amendments as may be required and/or approved by the Developer and/or the relevant authorities and do not form part of any offer or contract. These are not drawn to scale and are for the purpose of visual presentation only. The balcony shall not be enclosed unless with the approved balcony screen. For an illustration of the approved balcony screen, please refer to APPROVED BALCONY SCREEN DESIGN page of this brochure.



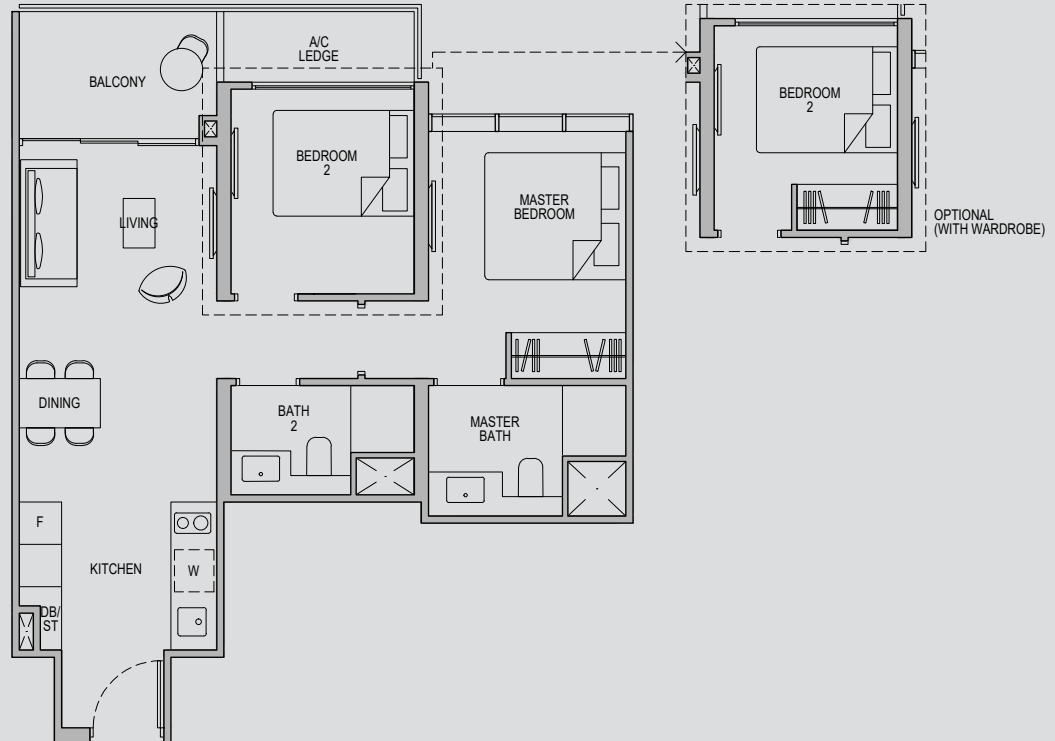
# 2 - BEDROOM DELUXE

Type 2D1

Area: 64 sqm (include 3 sqm A/C Ledge, 6 sqm Balcony)

Unit(s): #03-08 to #22-08

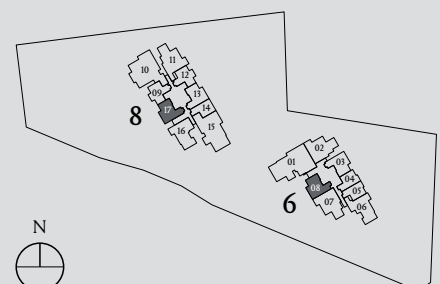
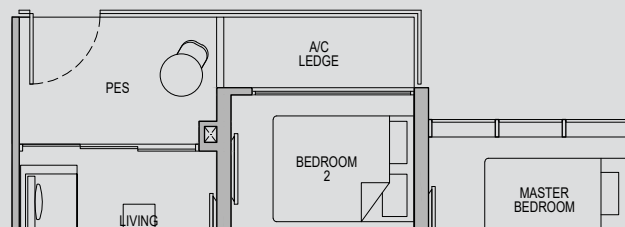
#02-17 to #22-17



Type 2D1-G

Area: 64 sqm (include 3 sqm A/C Ledge, 6 sqm PES)

Unit(s): #01-17



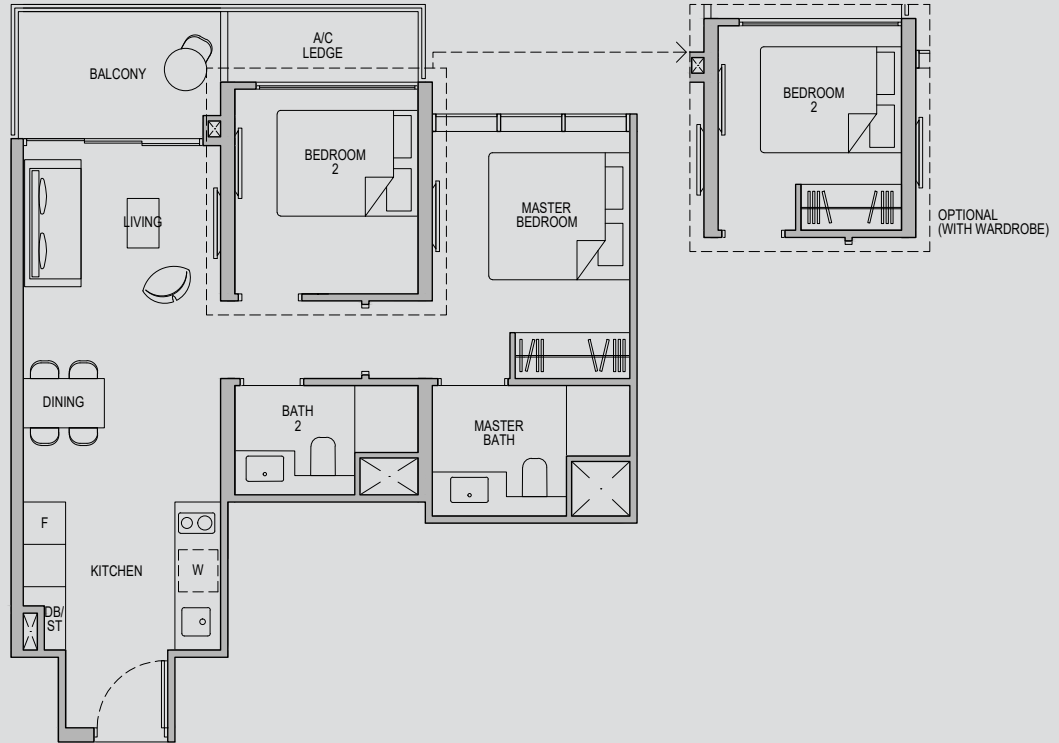
Plans are subject to change/amendments as may be required and/or approved by the Developer and/or the relevant authorities and do not form part of any offer or contract. These are not drawn to scale and are for the purpose of visual presentation only. The balcony shall not be enclosed unless with the approved balcony screen. For an illustration of the approved balcony screen, please refer to APPROVED BALCONY SCREEN DESIGN page of this brochure.

# 2 - BEDROOM DELUXE

Type 2D1a

Area: 64 sqm (include 3 sqm A/C Ledge, 6 sqm Balcony)

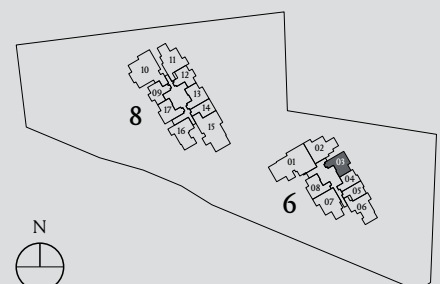
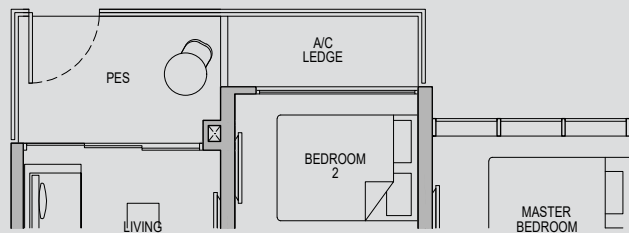
Unit(s): #02-03 to #22-03



Type 2D1a-G

Area: 64 sqm (include 3 sqm A/C Ledge, 6 sqm PES)

Unit(s): #01-03



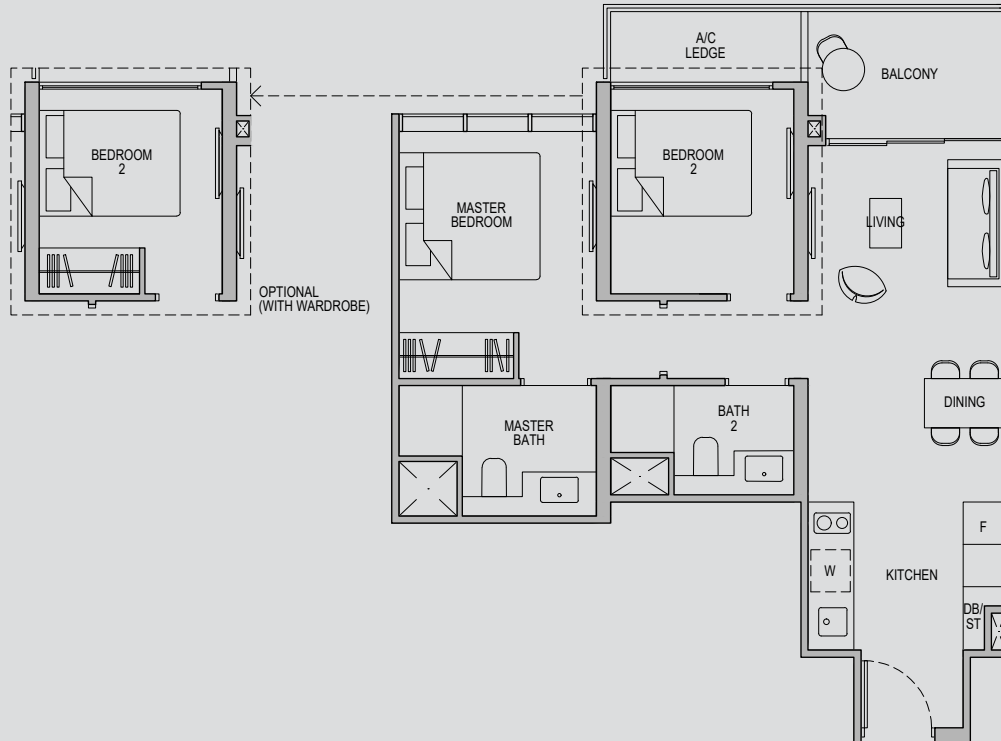
Plans are subject to change/amendments as may be required and/or approved by the Developer and/or the relevant authorities and do not form part of any offer or contract. These are not drawn to scale and are for the purpose of visual presentation only. The balcony shall not be enclosed unless with the approved balcony screen. For an illustration of the approved balcony screen, please refer to APPROVED BALCONY SCREEN DESIGN page of this brochure.

# 2 - BEDROOM DELUXE

Type 2D1b

Area: 64 sqm (include 3 sqm A/C Ledge, 6 sqm Balcony)

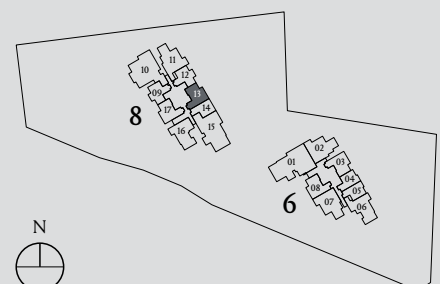
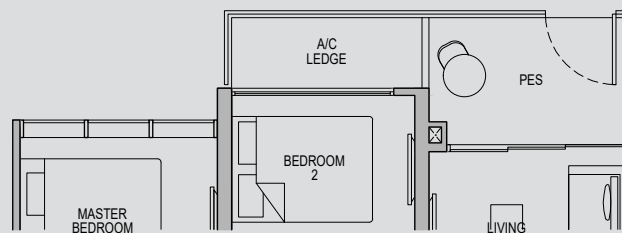
Unit(s): #02-13 to #22-13



Type 2D1b-G

Area: 64 sqm (include 3 sqm A/C Ledge, 6 sqm PES)

Unit(s): #01-13



Plans are subject to change/amendments as may be required and/or approved by the Developer and/or the relevant authorities and do not form part of any offer or contract. These are not drawn to scale and are for the purpose of visual presentation only. The balcony shall not be enclosed unless with the approved balcony screen. For an illustration of the approved balcony screen, please refer to APPROVED BALCONY SCREEN DESIGN page of this brochure.